



Microscrews in Braces Treatment

PUSAT PERGIAN U 优牙科中心 U DENTAL CENTER

Taman U 大学城: 26A, Jalan Kebudayaan 1, Taman Universiti, 81300 SKUDAI. Tel:607-521 1111, 607-5208508 SMS: 6012-8800100 HP:6 014-888 9000
 Taman Sentosa 新山火车: 25A, Jalan Sutera, Taman Sentosa, 80150 Johor Bahru. Tel: 07-333 3000 SMS: 6013-222 3000 HP: 6014-800 2000
 UDA/Tampoi 新山 乌达/淡杯: 39-01, Jalan Padi Emas 1/3, Uda Business Center, Bandar Baru UDA, 81200 Johor Bahru Tel: 607-2 444 666 SMS: 6016-6 800 200 HP: 6016-6 800100
 Taman Molek 百合: 84-01, Jalan Molek 2/2, Taman Molek, 81100, Johor Bahru. Tel: 07- 35 33 222 SMS:6 016-6 300 500 HP: 6019-500 8 500
 Bukit Indah 武吉英达: 65, Jalan Indah 16/12, Taman Bukit Indah, 81200 Johor Bahru. Tel: 07-232 GIGI, 07-232 4444, SMS:6 014-9 900 900 HP: 6014-888 2000
 Mount Austin 莫士丁: 70-01, Jalan Austin Heights 8/7, Taman Mount Austin, 81100 Johor Bahru. Tel: 607-364 3477 SMS: 6013-500 6 700 HP: 6016-200 4 500
 Masai/Seri Alam 马塞/新里亚南: 125-01, Jalan Suria 3, Bandar Seri Alam, 81750 Masai, Johor Bahru. Tel: 6014-803 0000

U Dental Specialist Clinic 优牙科专科诊所 Klinik Pakar Pergigian U

65A, Jalan Indah 16/12, Taman Bukit Indah, 81200 Johor Bahru, Johor. Tel: 607-234 2000 SMS: 6014-508 0000 HP: 6019-500 6 900
www.gigi.my info@gigi.my



Patient Information: Empower You To Make Informed Decision

***Please do not commit to a treatment if you do not understand**

INTRODUCTION

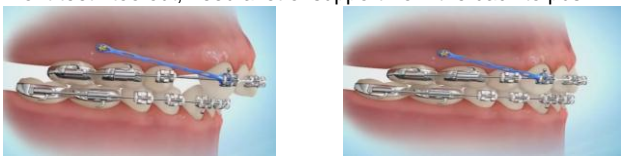
What is an orthodontic mini-screw ?

It is a small metal screw which is inserted through the gum into the jaw bone to act as an anchor to help move poorly positioned teeth. Some people also call them micro-screws, mini-implants or temporary anchorage devices (TADs).

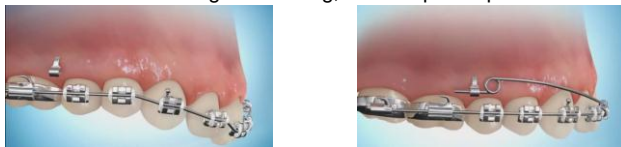
Why do I need to have a mini-screw ?

- In order to move poorly positioned teeth, the other surrounding teeth usually provide a stable support for the force applied by the brace.
- It is not always possible to use these teeth and sometimes the force may cause the wrong teeth to move. In such cases, a mini-screw can be used to act as an 'anchor' to help with straightening your teeth and closing up gaps.

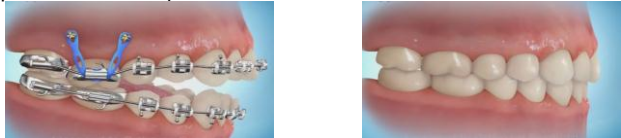
□ Front teeth too out, need a lot of support from the back to push in:



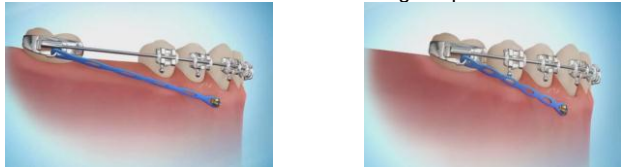
□ Front teeth too much gum showing, need to push up the front teeth:



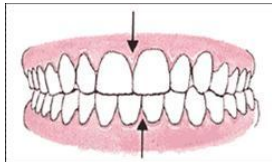
□ Back teeth too long, front teeth cannot be closed, need to push up the upper back teeth or push down the lower back teeth:



□ Need to push the back teeth to the front: Too much gap at the back, but front teeth need to maintained at the current good position:

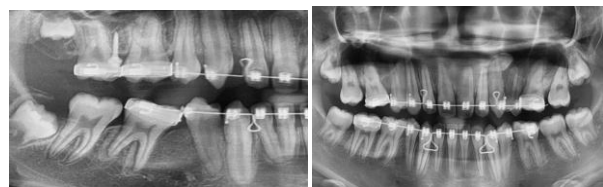


□ When front teeth midline needs to be shifted to one side-needs more force from one side



MicroscrewENPt.pdf

□ If first molar is used as anchor to push in the front teeth, the first molar will tilt forward, causing a triangular gap that not filled with gum/bone (even the teeth are touching each other)so it might become a food trap. More support can be gain by putting rings/bands at the first and second molars, but the gap might persist after braces treatment.



How will a mini-screw be placed?

- A mini-screw can be placed at any time during your brace treatment. For front teeth that need to be pushed back, this will be done 1-2 months before start pushing back.
- Local anaesthetic is used to numb the gum. You may also be asked to use an anti-bacterial mouthwash.
- A hole may be drilled into the jaw first to insert the screw or it may be gently inserted directly into the bone
- You may experience an odd pressure sensation as the screw is inserted.
- Sometimes a plastic device is used as a guide to help place the screw in exactly the right position.
- A brace can be attached to the mini-screw either straight away or at a later visit in order to start tooth movement.

Will it be painful?

- No. Mini-screw insertion itself is not painful. You may have a mild ache from the area for 24 hours after the anaesthetic wears off.
- If you experience any discomfort, take what you would normally have for a headache e.g. paracetamol, ibuprofen.
- Expect your teeth to feel slightly tender for 3-5 days following the adjustment of your fixed brace.

How do I take care of the micro-screw??

- Gently brush around the mini-screw twice daily using a fluoride toothpaste and a small headed toothbrush.
- Do not use an electric toothbrush around the mini-screw.
- Don't "fiddle" with it with your fingers or tongue!
- Use a chlorhexidine mouthwash to rinse around the mini-screw twice daily for the first 5 days.
- The mini-screw may feel a little bit loose at first. If the screw becomes very loose or the brace becomes detached, contact your dentist immediately.

What are the risks?

- There is limited evidence about how well mini-screws work but there are no major safety worries about using them. Success rates are greater than 70%.
- The mini-screw is usually placed so that it goes between the roots of two teeth. The majority remain stable during brace treatment. Possible risks are:
- The screw may touch a tooth root during placement. The root should heal with no problems.
- The screw becomes loose. It can usually be replaced in the same position at a later visit or in a different position.
- 5% of screws break during insertion. If this happens, the end of the mini-screw may be left in the bone. This should not cause any problems.
- About 20-30% of mini-screws fail early and need to be replaced or removed.
- Infection - very unlikely to happen if you keep the area clean as advised.

What if I do not want a mini-screw placed in my mouth?

Your dentist will explain the various ways to straighten your teeth and close up spaces. Mini-screws are often used to make your brace treatment as efficient and effective as possible.

Alternative options may involve wearing headgear (difficult to use) , the extraction of a tooth or accepting spaces between teeth. Your dentist will advise you on the best way to get the result you want. The final decision is yours.

Transpalatal Arch	Lingual Arch	Headgear	Protraction facemask

How long will the mini-screw be in my mouth?

The mini-screw is usually in place for several months whilst the teeth are being moved into a better position. Once tooth movement is complete, the screws are taken out

How is the mini-screw removed?

Very simply. No local anaesthetic is usually required. The gum and bone underneath will heal up completely within a few days with no discomfort.

What is the cost and mode of payment?

RM750 per screw. If the screw loosen for any reason (e.g infection, trauma etc), a new screw will be replace for free. If patient has no intention for replant, only half price will be charged. Braces treatment might need 2 screws, sometimes 4 (3 free 1) or even 6 screws (4 free 2). Installment is allowed 3 times in 9 months, or when the screws are removed, which ever is earlier